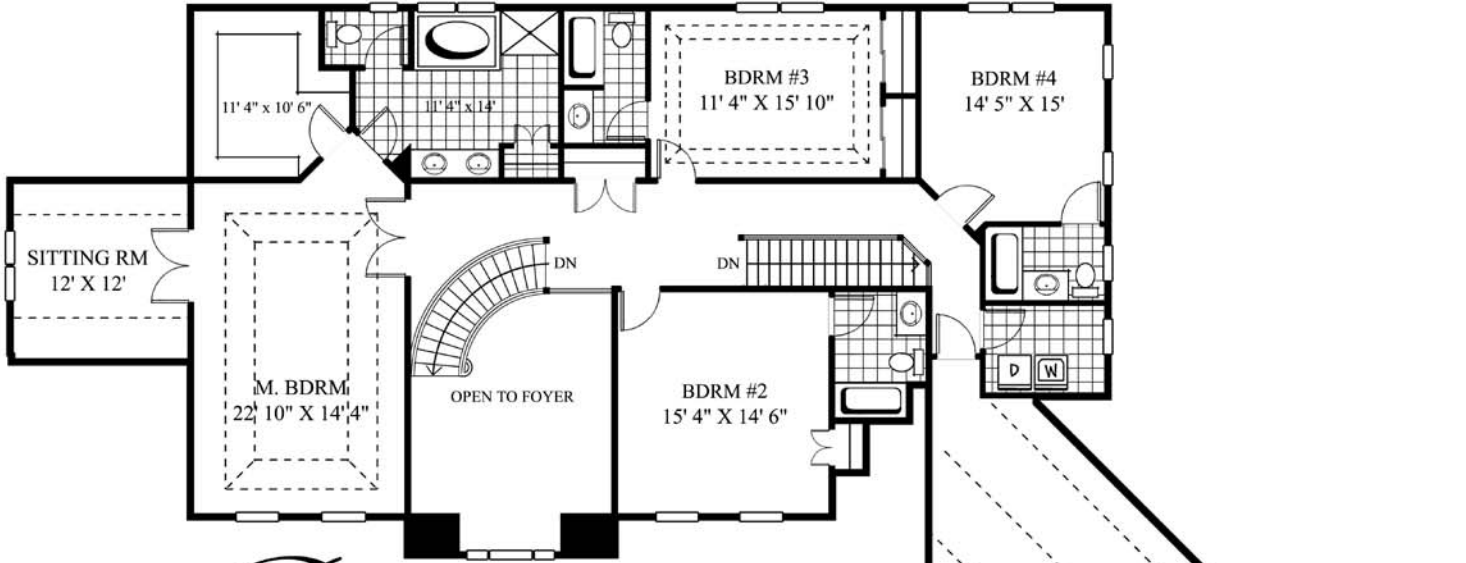


Model Name: The Ramsey

Bedrooms:	5/6	First Floor:	2,612 Sq. Ft.
Bathrooms:	5 Full, 1 Half	Second Floor:	1,934 Sq. Ft.
Laundry Room:	Second Floor	Total Living Area:	4,546 Sq. Ft.
Foundation:	Full Basement	Basement:	2,612 Sq. Ft.
Attached Garage:	862 Sq. Ft.	House Width:	102'-4"
Garage Stalls:	Three Car	House Depth:	79'-1"
Special Features:	Unfinished Bonus Room Over Garage Arched Main Stairway Conservatory Secondary Service Stairs Study/Guest Room Walk-In Kitchen Pantry Separate Den with Fireplace		

The classic carriage house design is alive and well in the Ramsey, where a front elevation marked by quoin details and a front entry 3-car garage with dormers blend harmoniously with the stately entrance. Adding to the spaciousness of this impeccable 4,500 sq. ft. residence is an unfinished upper level over the garage, which could serve as the perfect au pair suite, guest room, play room, or office. Each bedroom has its own private bath. The sheer elegance of this beautiful home is characterized by the stunning, arched stairway at the interior front entry foyer.

Available Elevations: Full Brick, Partial Brick/Siding, Full Siding



Rumsey

