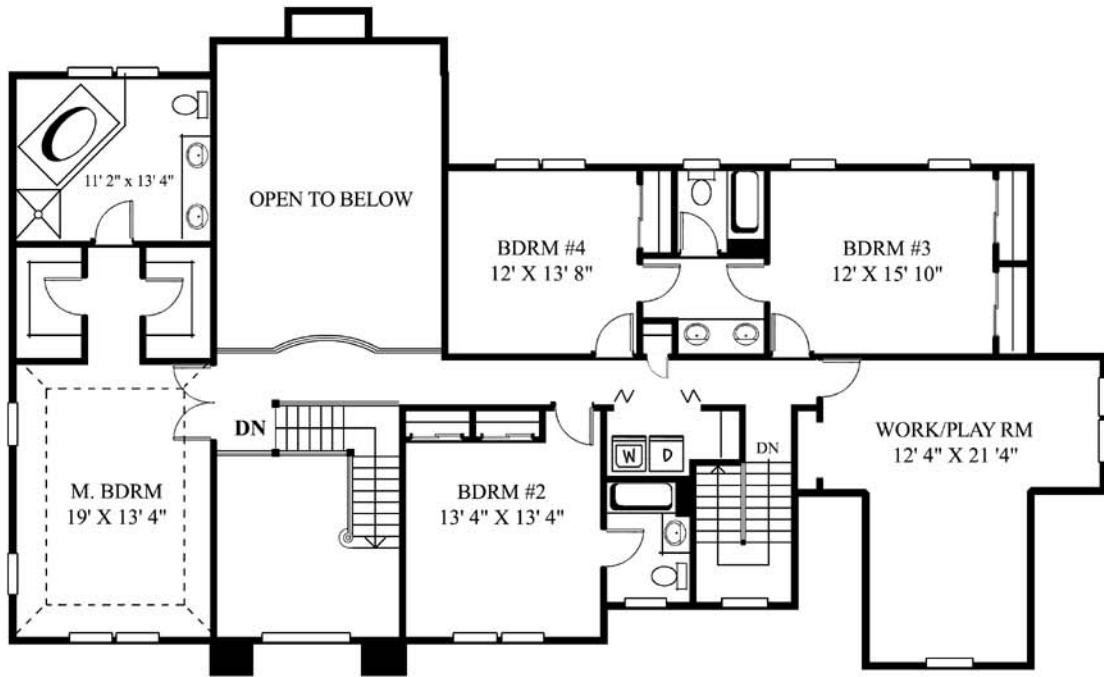


Model Name: The Dumont

Bedrooms:	4/5	First Floor:	2,010 Sq. Ft.
Bathrooms:	4 Full, 1 Half	Second Floor:	1,938 Sq. Ft.
Laundry Room:	Second Floor	Total Living Area:	3,948 Sq. Ft.
Foundation:	Full Basement	Basement:	2,010 Sq. Ft.
Attached Garage:	715 Sq. Ft.	House Width:	76'-8"
Garage Stalls:	Three Car	House Depth:	45'-8"
Special Features:	Secondary Service Stairs First Floor Full Bathroom Walk-In Kitchen Pantry Study/Guest Room Play Room/Fifth Bedroom		

A multitude of windows permeating the front elevation-including bay windows fronting the living and dining rooms, and an arched window rising majestically over the front entry door-symbolize the design intricacies incorporated into the Dumont. Happily, for the purchasers of this magnificent residence, that same concentration of detail touches every room in the 4,000 sq. ft. Dumont. Some of those details include "service" stairs leading from the interior garage entrance to the upper level, a first floor bathroom off the study to accommodate guests or grandparents, a walk-in kitchen pantry and three full bathrooms on the second level.

Available Elevations: Full Brick, Partial Brick/Siding, Full Siding



Dumont

