

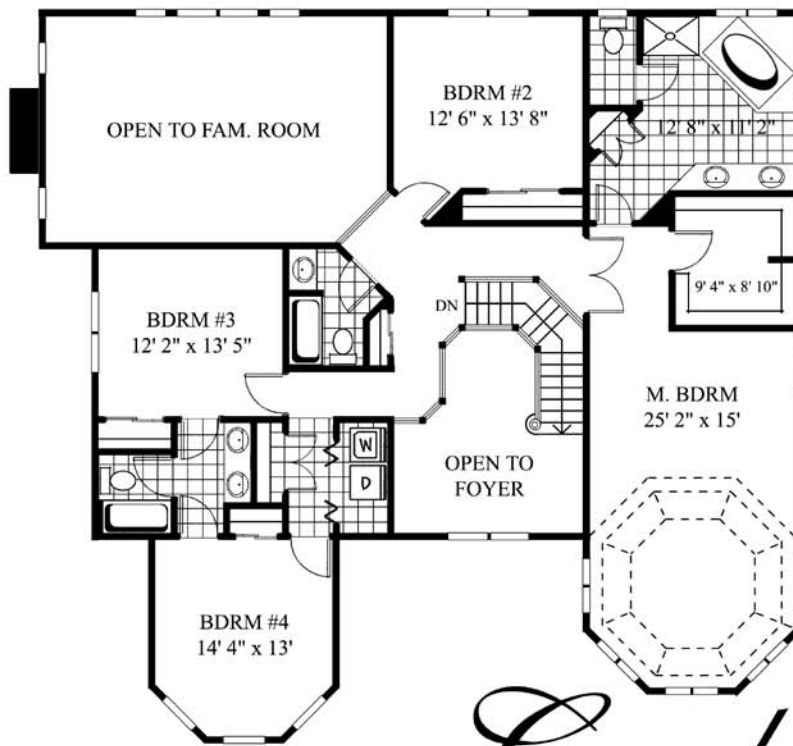
## Model Name: The Creskill

<b>Bedrooms:</b>	4	<b>First Floor:</b>	2,110 Sq. Ft.
<b>Bathrooms:</b>	4 Full	<b>Second Floor:</b>	1,873 Sq. Ft.
<b>Laundry Room:</b>	Second Floor	<b>Total Living Area:</b>	3,983 Sq. Ft.
<b>Foundation:</b>	Full Basement	<b>Basement:</b>	2,110 Sq. Ft.
<b>Attached Garage:</b>	693 Sq. Ft.	<b>House Width:</b>	58'-10"
<b>Garage Stalls:</b>	Three Car (Two car optional shown)	<b>House Depth:</b>	54'-4"

**Special Features:** Wrap-Around Front Porch  
Jack & Jill Bathroom on Second Floor  
First Floor Bathroom  
Study/Guest Room  
Optional 4<sup>th</sup> Bedroom and Full Bath Over 2-Car Garages

Victorian appeal “lives” in the Creskill home design, from its charming wrap-around front porch to gable details, to a dual front door entry to a sitting room with cathedral ceiling. Girsh Development made certain to not only closely replicate historic exterior components of this home, but also to incorporate the wealth of proportion and luxury living appointments-such as an upper level Jack & Jill bathroom-today’s families demand in a new home.

Available Elevations: Full Brick, Partial Brick/Siding, Full Siding



# *Crestkill*

